

SANDPIPER NEWS

April 2024



APRIL BIRTHDAYS

THERESA TRUDEAU- APRIL 1

LOUISE FEYRER-APRIL 20

ESTHER MACDONALD-APRIL 8

DOROTHY ASSELSTINE-APRIL 25

ORVAL BROWNELL -APRIL 16

WELCOME NEW RESIDENTS

Orval Brownell & Mary Rupert

We are happy to have you join our Sandfield Family!

HIGHLIGHTS FOR APRIL

April 1- Easter Monday

-April Fool's Day

**April 3- Residents' Council
meeting**

April 4- Ball Cap Day

April 5 Tim Horton's Treat

April 8- Solar Eclipse

**April 9- Entertainment with
Norm and Diane**

**April 12- Entertainment with
Lucien**

April 16- Choir

April 17- Lunch Outing -(RET.)

**April 18- Entertainment with
the Ultra Classic's**

April 19- Pub Hour

**April 26- Monthly Birthday
Party**

Around Sandfield

HAPPY BIRTHDAY MARCH!



Spring, Spring is coming soon,
Grass is green and flowers bloom,
Birds returning from the south,
Bees are buzzing all about,
Leaves are budding everywhere,
Spring, Spring is finally here!



NOTES FROM THE ADMINISTRATOR

Hello Miss April!

Hope you all had a great Easter, as it did grace us earlier than previous years. That Easter bunny certainly never had much snow to contend with.



Stephanie Kinnear
Administrator

Spring has sprung! At Sandfield and around the SD&G area. This year, we had record temperatures and decreased snowfalls across the country, according to meteorologists. We've begun to exit out of the El Nino patterns so sit back and wait to see what the Summer and Fall brings us this year. This month is very interesting especially if you are an astronomer, with the solar eclipse occurring on April 8! Leading up the 8, there are also many Moon patterns, planets and stars that are lining up.

Here at Sandfield Place, we are excited for Spring as our residents will be able to get outside once the days get slightly warmer and the sun gathers more strength. The evenings are noticeably longer too.

National Volunteer Week is during the month of April. Our Home remains committed to observing and celebrating the time that our Volunteers take to spend with us. They truly are the heart of our community. Without them, many of our residents would not have opportunities to go on outings, listen to top notch entertainers, have extra one to one visits or have visits from local parishes, for this we say "Thank You!"

As always, I caution those of us who are not feeling well. Please use the hand sanitizers when you visit and leave, wear a mask if you feel more comfortable doing so, and of course, stay home if you're feeling unwell.

Cheers and Happy April!!

Flashback.....

March was a blast!!

It was a fun month! There were lots of people in to entertain us like Norm & Diane, Ed & Marie, The Cedar Valley Choir and The Roadhouse Dancers. What a treat to have them in to keep our toes tapping.

We were privileged to celebrate Doreena's 100th birthday what a milestone! We had a St. Patrick's celebration, an Easter

Social and a virtual trip to the sugar bush where we tried some local maple syrup on top of homemade Johnny Cakes, YUM!

We are looking ahead to April where we will honour our volunteers; it will be our first in person celebration since 2019.

Thanks to everyone who planned and participated in these events it always adds to the fun!



Ann Evans
Activity &
Volunteer Coordinator

FROM THE DESK OF THE D.O.C

HAPPY APRIL EVERYONE!

I HAVE AN UPDATE TO SHARE WITH YOU ABOUT OUR DENTAL PROGRAM. GOLDEN CARE DENTAL WHO IS OUR CURRENT PROVIDER WILL NO LONGER BE KNOWN UNDER THAT NAME. HOWEVER THE SAME PEOPLE WILL BE COMING IN TO THE HOME TO PROVIDE DENTAL SERVICES TO OUR RESIDENTS. WHEN I HAVE THEIR NEW COMPANY NAME I WILL SHARE IT WITH YOU. THE GOOD NEWS IS THE SERVICES WILL NOT CHANGE. I WILL KEEP YOU POSTED!



Sam Below
D.O.C

WITH THE BEAUTIFUL WEATHER APPROACHING WE ARE ASKING FAMILIES TO UPDATE THEIR LOVED ONES WARDROBE. PLEASE SWAP OUT WARM WINTER CLOTHING FOR LIGHTER ATTIRE. THANK YOU SO MUCH FOR YOUR COOPERATION.



WISHING EVERYONE A GREAT MONTH!

HAPPY SPRING,

HOPE EVERYONE SURVIVED THE WINTER, WHICH WASN'T TOO BAD. WE'VE HAD MUCH WORSE. NOW WITH SPRING UPON US WE WILL BE STARTING THE NEW MENU IN APRIL. THIS SPRING / SUMMER MENU WILL BE IN PLACE UNTILL OCTOBER. THE NEW MENU WILL CONTINUE TO HAVE MANY OF THE RESIDENT FAVORITES, ALONG WITH MORE COLD PLATES, FRESH FRUIT AND VEGETABLES WHEN IN SEASON. WE DO HAVE A FEW NEW FOOD CHOICES, SUCH AS HOT ROAST BEEF SANDWICH, BEEF FRIED SPAGHETTI, POPCORN CHICKEN, CHICKEN AL A KING, CROISSANTS, AND SLOPPY JOES. ALSO, WITH THE SUMMER MONTHS AHEAD OF US YOU CAN EXPECT SOME BBQ'S TO BE HAPPENING (HOTDOGS, HAMBURGERS). LASTLY, WE WILL HAVE OUR NEXT THEMED MEAL IN THE MONTH OF MAY AND WE WILL EXPLORE CHINA, AND A CHINESE SUPPER WILL BE INCLUDED! 祝你有一个愉快的夏天 (“HAVE A GREAT SUMMER” IN CHINESE)

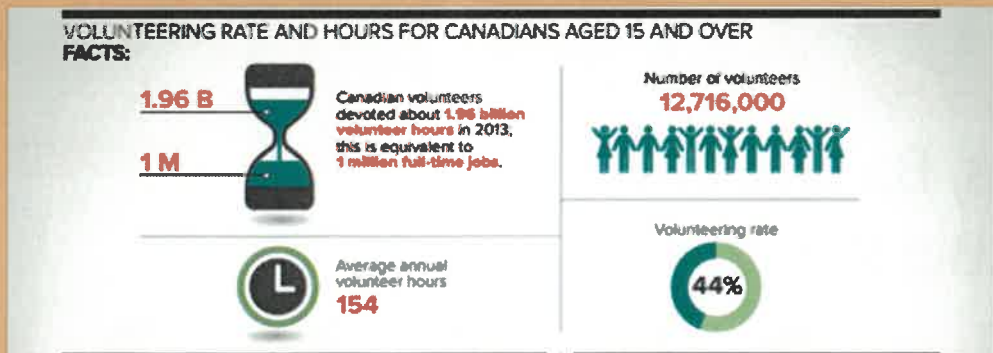
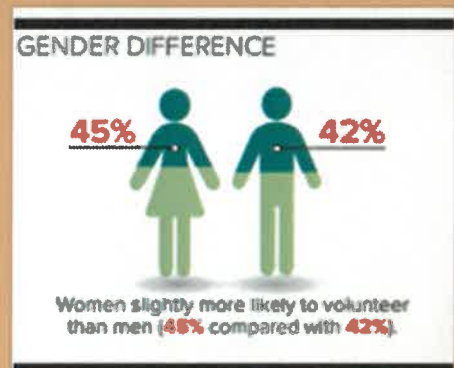
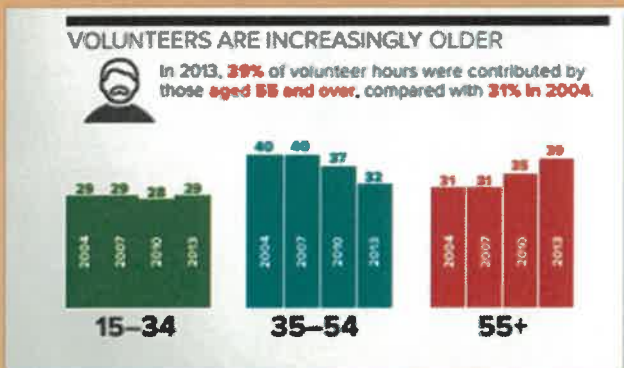


Kelly Bailey
Food Service
Supervisor

We love our volunteers!!



**THE HEART ❤️
OF A VOLUNTEER
IS NOT MEASURED
IN SIZE, BUT BY THE
DEPTH OF THE
COMMITMENT TO
MAKE A
DIFFERENCE IN THE
LIVES OF OTHERS**





Crafts, Baking and a
Big Party!



In Memoriam
Marion Charron -March 9, 2024
Jeanette Prieur- March 30



We, at Sandfield Place join together to extend our sincere condolences to the family and friends of our departed residents.

Memorial Donations to the Residents' Council of Sandfield Place are accepted and appreciated.

Memorial cards are available at the business office and the activity office. Receipts are issued.

Solar Eclipse 2024

FUN FACTS!

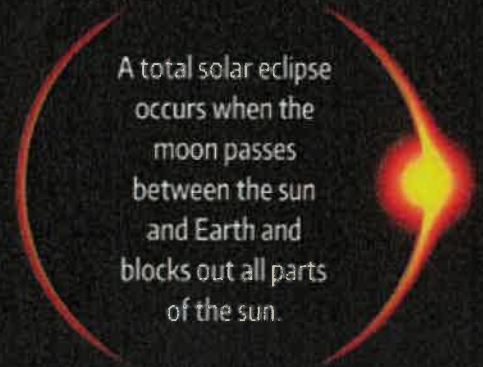
The halo of the sun's uppermost atmosphere that's visible during a total solar eclipse is called the corona.

The entire eclipse will take about two and a half hours, but totality only lasts about four minutes at locations along its path.

Don't be alarmed if you start to hear crickets chirping—some animals mistake the eclipse's effects for dusk.

What is a Total Solar Eclipse?

A total solar eclipse occurs when the moon passes between the sun and Earth and blocks out all parts of the sun.



Path of the solar eclipse





Spring Word Search



BLOSSOM

BLOOM

FLOWERS

RAIN

SHOWERS

EASTER

SPRING BREAK

GRASS

HATCH

BIRDS

SUNSHINE

SEASON

MARCH

APRIL

MAY

N	L	M	O	R	D	Y	S	M	B	M	O	O	L	B
N	I	A	R	M	E	L	E	S	E	E	A	W	O	G
U	O	Y	E	L	O	S	E	A	S	O	N	M	S	S
L	M	L	I	O	D	N	E	K	L	A	Y	R	P	H
H	C	T	A	H	I	N	G	Q	L	D	B	R	K	U
U	T	P	E	H	O	O	D	I	O	O	I	F	C	L
Y	T	I	S	R	E	T	R	M	D	N	T	R	E	U
V	W	N	A	O	E	P	J	T	G	N	E	D	X	V
E	U	G	R	N	A	D	M	B	R	A	Y	A	T	E
S	L	M	E	U	B	G	R	T	A	S	O	U	P	A
R	E	F	G	L	C	E	B	T	S	I	R	G	A	S
B	A	L	Y	B	A	E	N	O	S	R	E	H	R	T
Y	A	O	I	K	D	O	O	H	R	E	H	O	H	E
U	Y	W	E	M	S	H	O	W	E	R	S	E	D	R
C	H	E	F	A	M	C	L	Y	O	G	D	R	E	S
X	L	R	O	V	Z	R	C	O	J	B	R	I	N	O
F	I	S	E	A	R	A	K	S	L	E	I	O	E	L
B	L	O	S	S	O	M	C	B	J	W	B	M	O	B